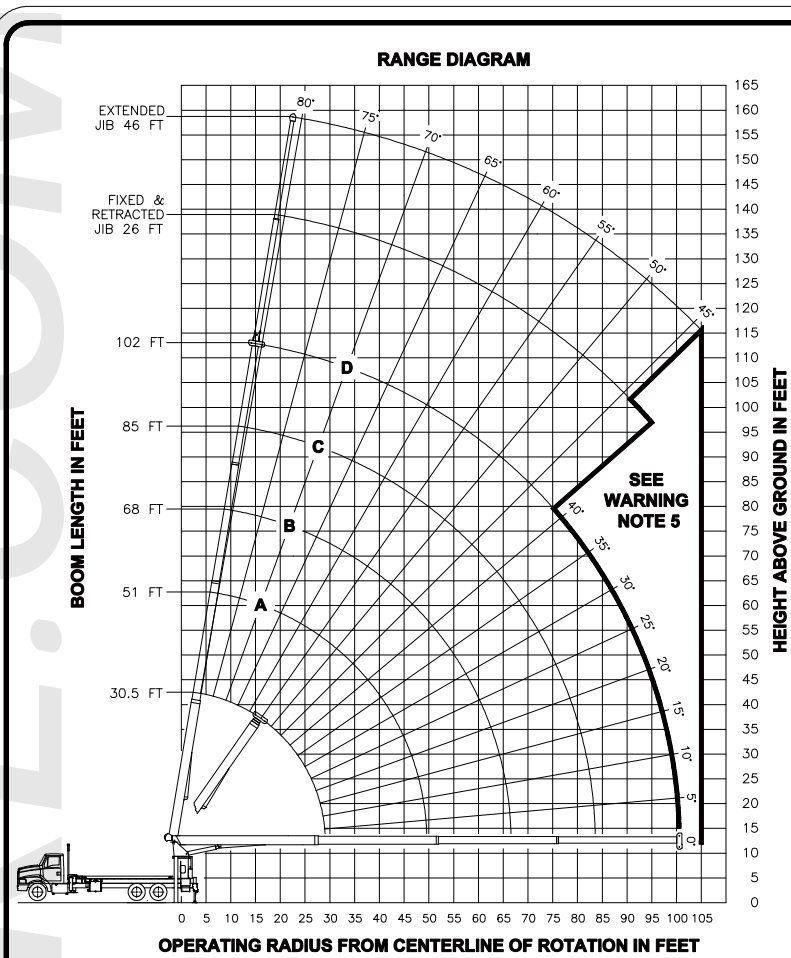


To learn more about this model, call 414-764-9200 or visit giuffre.com today!



LMI OPERATING CODES

SETTING	CRANE CONFIGURATION	SETTING	CRANE WITH PERSONNEL LIFTING PLATFORM
#1	--- MAIN BOOM	#5	--- PERSONNEL LIFTING PLATFORM ON MAIN BOOM
#2	--- FIXED JIB	#6	--- PERSONNEL LIFTING PLATFORM ON FIXED JIB
#3	--- TELESCOPIC JIB-RETRACTED	#7	--- PERSONNEL LIFTING PLATFORM ON TELESCOPIC JIB-RETRACTED
#4	--- TELESCOPIC JIB-EXTENDED	#8	--- PERSONNEL LIFTING PLATFORM ON TELESCOPIC JIB-EXTENDED

ALLOWABLE LINE PULL

1 PART	2 PART	3 PART	4 PART	5 PART	6 PART	7 PART
8500 LBS	17000 LBS	25500 LBS	34000 LBS	42500 LBS	51000 LBS	60000 LBS
7400 LBS	14800 LBS	22200 LBS	29600 LBS	37000 LBS	44400 LBS	51800 LBS

WARNING

ANTI-TWO-BLOCK SYSTEM MUST BE IN GOOD OPERATING CONDITION BEFORE OPERATING CRANE.

REFER TO THE OWNER'S MANUAL.

KEEP AT LEAST 3 WRAPS OF LOAD LINE ON THE DRUM AT ALL TIMES.

9/16" 6X25 IWRC (3.5:1 SF) - 29750 LBS MIN BREAKING STRENGTH

9/16" ROT RESISTANT (5.0:1 SF) - 37000 LBS MIN BREAKING STRENGTH

DEDUCTIONS FROM RATED LOADS FOR LOAD HANDLING DEVICES SUPPLIED BY MANITEX

AUXILIARY BLOCK	50 LBS
WIRELINE SHEAVE HEAD	100 LBS
AUXILIARY WINCH	200 LBS
OVERHAUL BALL	SEE OVERHAUL BALL MFG. NAMEPLATE
LOAD BLOCK	SEE BLOCK MFG. NAMEPLATE
HOSE REEL	140 LBS
SWING AROUND JIB	SEE LOAD CHART

WARNING
LIFTING OFF THE MAIN BOOM POINT WHILE THE JIB IS ERRECTED IS NOT INTENDED OR APPROVED.

LOAD RATINGS IN LBS WITH OUTRIGGERS AND STABILIZERS EXTENDED					JIB LOAD RATINGS WITH OUTRIGGERS AND STABILIZERS EXTENDED					
LMI CODE #1					FIXED JIB		TELESCOPIC JIB			
BOOM LENGTH (FT)	LOADED BOOM ANGLE	BOOM LENGTH AND MARKET			LMI CODE #2	LMI CODE #3	LMI CODE #4			
		A	B	C	D	JIB LENGTH FOR ALL BOOM LENGTHS SEE WARNING NOTE 4	JIB LENGTH FOR ALL BOOM LENGTHS SEE WARNING NOTE 4	JIB LENGTH FOR ALL BOOM LENGTHS SEE WARNING NOTE 4		
5	80	30.5 FT	51 FT	68 FT	85 FT	102 FT	26 FT	26 FT	46 FT	
8	75	39690								
10	71	33510	79 22500							
12	67	29120	77 22500							
15	60	24440	73 21710	79 20590						
20	48	19280	67 16910	74 15830	78 14420	81 10500				
25	33	15480	61 13850	70 12840	75 12180	78 9650	25 81 5300	81 5100		
30			54 11700	65 10770	72 10140	76 8670	30 79 5300	79 5100	81 3050	
35			47 9770	60 9240	68 8640	73 7670	35 77 4990	77 4730	79 3050	
40			38 7510	55 7720	64 7490	70 6490	40 75 4580	75 4310	77 3050	
45			27 5910	50 6110	60 6220	66 5590	45 72 4190	72 3910	76 3050	
50				43 4920	56 5030	63 4860	50 70 3830	70 3550	74 2910	
55				36 3990	51 4100	60 4160	55 68 3480	68 3110	72 2740	
60				28 3250	47 3360	56 3420	60 65 3020	65 2670	70 2590	
65				15 2630	41 2760	53 2820	65 63 2630	63 2280	68 2410	
70						36 2250	49 2320	70 60 2310	60 1950	66 2130
75						29 1820	45 1890	75 57 2010	57 1670	63 1880
80						19 1450	40 1530	80 54 1640	54 1340	61 1610
85							36 1210	85 51 1320	51 1030	59 1400
90							29 930	90 48 1050	48 750	56 1200
95							22 690	95 45 800	45 500	54 970
100								100 42 580		51 750
105										48 550
					490 LBS	290 LBS	220 LBS	180 LBS	150 LBS	DEDUCTIONS FOR STOWED FIXED JIB
					730 LBS	440 LBS	330 LBS	260 LBS	220 LBS	DEDUCTIONS FOR STOWED TELESCOPIC JIB

- WARNING**
- THE OPERATOR MUST READ AND UNDERSTAND THE OWNER'S MANUAL BEFORE OPERATING THIS CRANE.
 - POSITIONING OR OPERATION OF CRANE BEYOND AREAS SHOWN ON THIS CHART IS NOT INTENDED OR APPROVED EXCEPT WHERE SPECIFIED IN OWNER'S MANUAL.
 - LOADED BOOM ANGLES AT SPECIFIED BOOM LENGTHS GIVE ONLY AN APPROXIMATION OF THE OPERATING RADIUS. THE BOOM ANGLE BEFORE LOADING SHOULD BE GREATER TO ACCOUNT FOR DEFLECTIONS. DO NOT EXCEED THE OPERATING RADIUS FOR RATED LOADS.
 - THE OPERATING RADIUS SHOWN IN THE JIB RATING CHART IS FOR FULLY EXTENDED BOOM ONLY. WHEN BOOM IS NOT FULLY EXTENDED, USE ONLY LOADED BOOM ANGLE TO DETERMINE LOAD RATING OF JIB.
 - BOOM MUST BE FULLY RETRACTED WHEN JIB IS ERRECTED, BEFORE LOWERING BOOM THRU THIS AREA.
 - FOR BOOM ANGLES NOT SHOWN ON JIB RATING CHART, USE RATING OF NEXT LOWER BOOM ANGLE.
 - FOR BOOM LENGTHS NOT SHOWN, USE RATING OF NEXT SHORTER OR LONGER BOOM LENGTH, WHICHEVER IS LESS. FOR RADII NOT SHOWN, USE RATING OF NEXT LONGER RADIUS.
 - CRANE LOAD RATINGS ON OUTRIGGERS ARE BASED ON FREELY SUSPENDED LOADS WITH THE MACHINE LEVELED AND STANDING ON A FIRM UNIFORM SUPPORTING SURFACE. NO ATTEMPT SHALL BE MADE TO MOVE A LOAD HORIZONTALLY ON THE GROUND IN ANY DIRECTION.
 - PRACTICAL WORKING LOADS DEPEND ON SUPPORTING SURFACE, WIND, AND OTHER FACTORS AFFECTING STABILITY SUCH AS HAZARDOUS SURROUNDINGS, EXPERIENCE OF PERSONNEL, AND PROPER HANDLING, ALL OF WHICH MUST BE TAKEN INTO ACCOUNT BY THE OPERATOR.
 - THE MAXIMUM LOAD WHICH MAY BE TELESCOPED IS LIMITED BY HYDRAULIC PRESSURE, BOOM ANGLE, AND BOOM LUBRICATION. IT IS SAFE TO ATTEMPT TO TELESCOPE ANY LOAD WITHIN THE LIMITS OF THE LOAD RATING CHART. BOOM MUST BE FULLY RETRACTED AGAINST BOOM STOPS AT ALL TIMES WHEN LIFTING MINIMUM BOOM LENGTH CAPACITY LOADS.
- INFORMATION**
- DEDUCTIONS MUST BE MADE FROM RATED LOADS FOR STOWED JIB, OPTIONAL ATTACHMENTS, HOOKS, AND LOAD-BLOCKS (SEE DEDUCTION CHART). WEIGHTS OF SLINGS AND ALL OTHER LOAD HANDLING DEVICES SHALL BE CONSIDERED A PART OF THE LOAD.
 - CRANE LOAD RATINGS WITH OUTRIGGERS ARE BASED ON OUTRIGGERS AND STABILIZERS EXTENDED AND SET WITH MACHINE LEVELED.
 - LOAD RATINGS ABOVE THE HEAVY LINE ARE STRUCTURALLY LIMITED CAPACITIES. LOAD RATINGS BELOW THE HEAVY LINE ARE STABILITY LIMITED CAPACITIES AND DO NOT EXCEED 85% OF TIPPING.
- DEFINITIONS**
- OPERATING RADIUS IS THE HORIZONTAL DISTANCE FROM THE AXIS OF ROTATION TO THE CENTER OF THE VERTICAL HOIST LINE OR TACKLE WITH LOAD APPLIED.
 - LOADED BOOM ANGLE AS SHOWN IN THE COLUMN HEADED BY \angle IS THE INCLUDED ANGLE BETWEEN THE HORIZONTAL AND LONGITUDINAL AXES OF THE BOOM BASE AFTER LIFTING RATED LOAD AT RATED RADIUS.

MODEL 102WL

CRANE MEETS ANSI B30.5 REQUIREMENTS

7300096-006 NR

AREA OF OPERATION

To learn more about this model, call 414-764-9200 or visit giuffre.com today!

