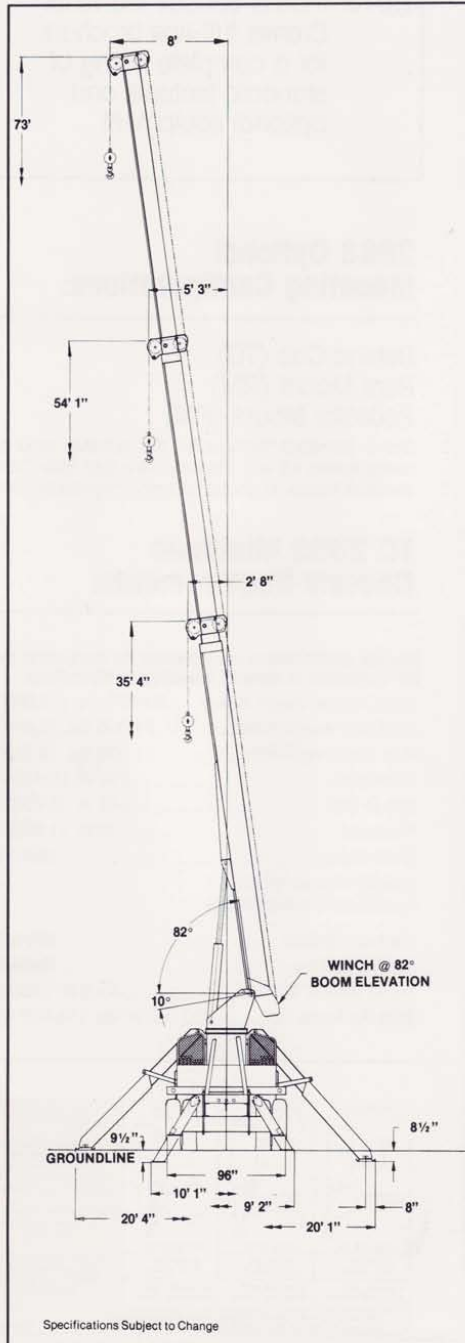


2800 Series

STINGER 2863

Dimensional Data:



TC 2863:

Maximum sheave height: 73' (22.2 m)

Maximum lifting radius: 61' 6" (18.7 m)

Maximum sheave height with 40' (12.2 m) Jib: 113' (34.4 m)

Maximum lifting capacity: 28,800 lbs. (13,063 kg)

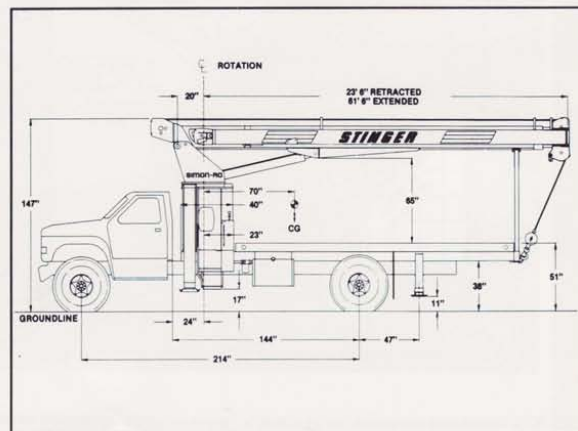
TC 2863 Weights:

Standard TC 2863 with 18' (5.5 m) Subframe13,950 lbs. (6,328 kg)
 Optional Wood Flatbed:1,570 lbs. (712 kg)
 Optional Two-Stage Jib:915 lbs. (415 kg)
 Minimum axle weights with crane installed on truck and in stowed configuration for 85% of tipping stability (without jib).

Front Axle8,900 lbs. (4,037 kg)

Rear Axle15,800 lbs. (7,167 kg)

Do Not Operate Within 10 Feet Of Overhead Power Lines.




© Copyright 1997 Terex Cranes Form #TC 2863

2800 Series

STINGER 2863

2863 Capacity and Range Chart:

CAPACITY CLASSIFICATION	LOAD RATINGS IN LBS. WITH OUTRIGGERS EXTENDED					AREA OF OPERATION 
	25 FT BOOM LENGTH	35 FT BOOM LENGTH	44 FT BOOM LENGTH	53 FT BOOM LENGTH	63 FT BOOM LENGTH	
4 78	28800					<p>DEDUCTIONS FROM RATED LOADS FOR LOAD HANDLING DEVICES</p> <p>AUXILIARY BLOCK: 50 LBS</p> <p>OVERHAUL BALL: 125 LBS</p> <p>CRANE LOAD BLOCK: 200 LBS</p>
5 78	24000					
8 89	16800	74 14200	78 14200			
10 64	14200	72 13400	76 13000	78 12600		
12 58	12200	68 11500	73 11100	78 10800	78 9425	
15 49	10100	63 9525	69 9125	73 8825	78 7725	
20 32	7425	53 7325	62 7025	67 6725	71 6425	
25		42 5825	54 5525	61 5425	66 5225	
30		26 4425	45 4525	53 4325	61 4225	
35			35 3725	47 3625	56 3525	
40			20 2825	38 3025	50 2925	
45				29 2525	44 2425	
50				14 1725	36 2125	
55					37 1725	
60					13 1225	

NOTE: RATINGS ABOVE THE HEAVY LINE ARE BASED ON STRUCTURAL COMPLIANCE AND NOT ON MACHINE STABILITY

450 325 250 200 175 \leftarrow STOWED JIB DEDUCTIONS

NOTE: Please consult the Terex Cranes full-line brochure for a complete listing of standard features and optional equipment.

2863 Optional Mounting Configurations:

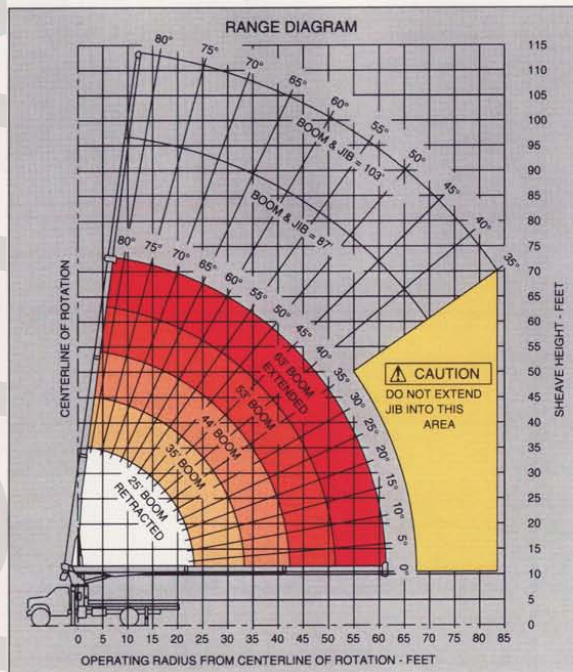
- Behind Cab (TC)
- Rear Mount (RM)
- Pedestal Mount (PM)

(Some standard features for the optional mounting configurations will vary. Please consult your Terex Cranes dealer or factory for chassis and mounting requirements.)

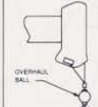

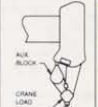
TC 2863 Minimum Chassis Requirements:

Chassis specifications are minimum for truck-crane mount. Not applicable to optional mounting configurations.

- Gross Vehicle Weight Rating.....33,000 lbs. (14,968 kg)
- Front Axle Weight Rating.....12,000 lbs. (5,443 kg)
- Rear Axle Weight Rating.....21,000 lbs. (9,525 kg)
- Wheelbase.....214 in. (5,436 mm)
- Cab To Axle.....144 in. (3,658 mm)
- Afterframe.....75 in. (1,905 mm)
- Transmission..... Heavy-Duty
(Neutral lock-up required for automatic transmission)
- Electrical System..... Heavy-Duty
- Cooling System..... Heavy-Duty
- Frame Section Modulus..... 15.9 in.³ (260 cm³)
- RBM Per Frame Fail.....1,400,000 in./lbs. (16,130 kg-m)



NOTE: Diagrams depict recommended mounting dimensions. The dimensions of optional pedestal and rear mounts will vary. Please consult your dealer or Terex Cranes for specifics. Dimensions do not include load deflection.

1 PART LINE	2 PART LINE	3 PART LINE	CAUTION ANTI-TWO-BLOCK SYSTEM MUST BE IN GOOD OPERATING CONDITION BEFORE OPERATING CRANE. REFER TO OWNER'S MANUAL. KEEP AT LEAST 3 WRAPS OF LOADLINE ON DRUM AT ALL TIMES. USE ONLY 9/16" DIAMETER CABLE WITH 33,000 LB BREAKING STRENGTH ON THIS MACHINE.
 OVERHAUL BALL LOADS UP TO 9,600 LBS. STD. CABLE 6,720 LBS. ROT. RESISTANT CABLE	 CRANE LOAD BLOCK LOADS UP TO 19,200 LBS. STD. CABLE 13,440 LBS. ROT. RESISTANT CABLE	 AUX. BLOCK CRANE LOAD BLOCK LOADS UP TO 28,800 LBS. STD. CABLE 20,160 LBS. ROT. RESISTANT CABLE	

THIS MACHINE COMPLIES WITH OSHA REGULATIONS 1910.180 AND 1926.550 WHERE APPLICABLE AT DATE OF MANUFACTURE

© Copyright 1997 Terex Cranes Form #TC 2863