

Greer Company

MicroGuard[®]-586 Application Data Sheet

Boom Trucks

Information & outline of application requirements.

The completion of this application data sheet is required prior to the application of a MicroGuard[®] Rated Capacity Indicator to any specific machine model. The information provided by this document is used to initialize the calibration of the rated capacity indicator in order to ensure minimum on-site calibration effort.

A full capacity chart with detailed notes and range diagrams is required in order to complete the system application.

Machine Outline

Crane Make & Model:

Chart Numbers:
(Supply with this document)

Units of length:
Check appropriate

Feet	Meters
-------------	---------------

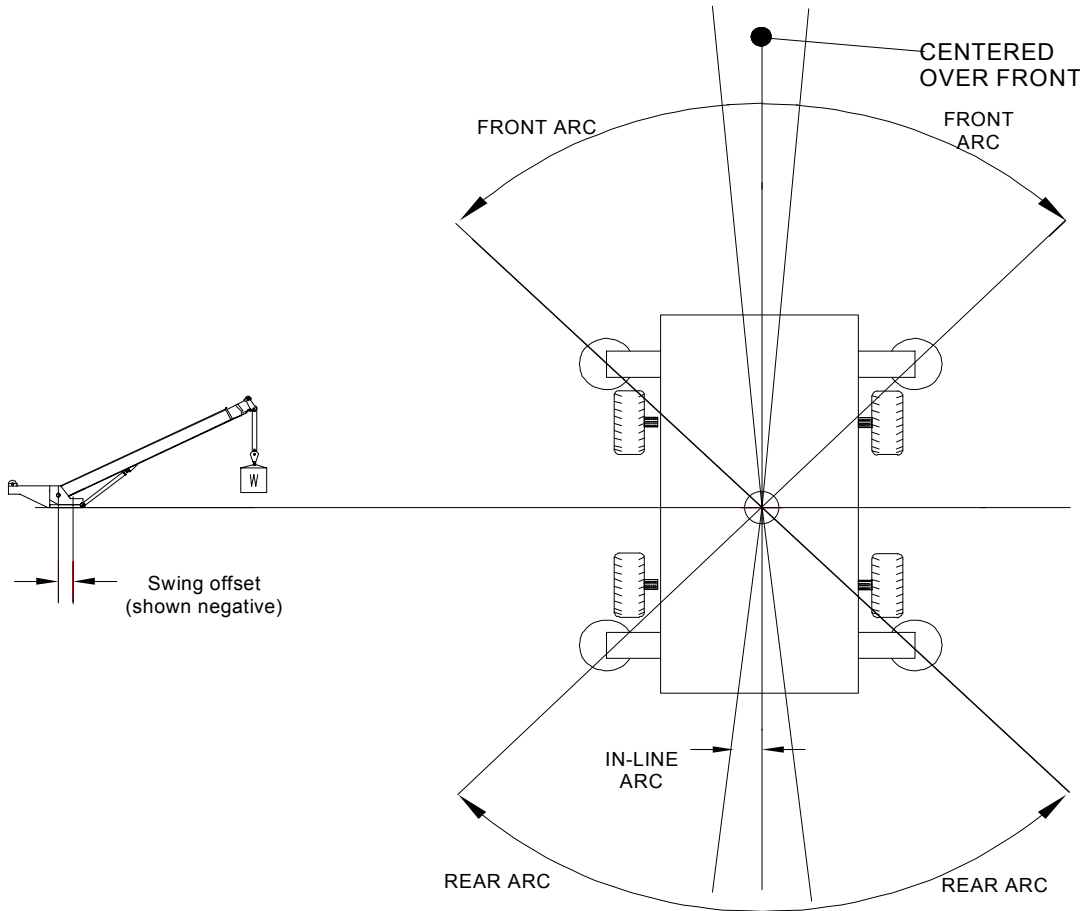
Units of force:
Check appropriate

Pounds*1000	Tons(US)	Tons(UK)	Tons(Metric)
--------------------	-----------------	-----------------	---------------------

Greer Company

Swing Data

The following dimensions are required when the rated capacity indicator is to be fitted with swing switch definition. Indicate the appropriate arcs required by the chart.



Lengths

Swing
Offset

Angles

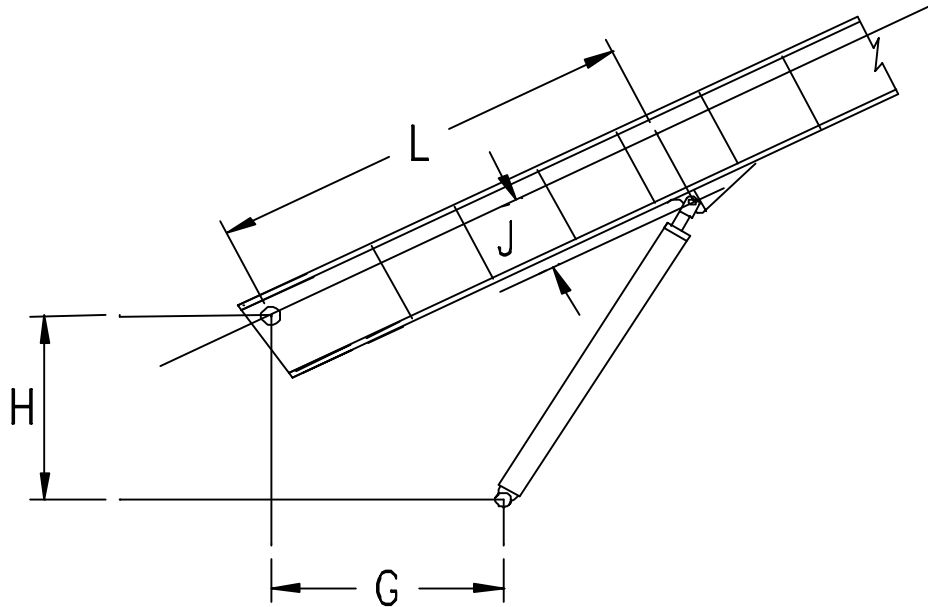
Front Arc

Rear Arc

In-Line Arc

Greer Company

Boom Hoist Data



Lengths

L - horizontal along boom from boom pivot to upper cylinder pin

J - vertical across boom from boom pivot to upper cylinder pin

Dimension is negative when boom pivot is above upper cylinder pin

G - horizontal between boom pivot and lower cylinder pin

H - vertical between boom pivot to lower cylinder pin

B - diameter of boom hoist cylinder bore

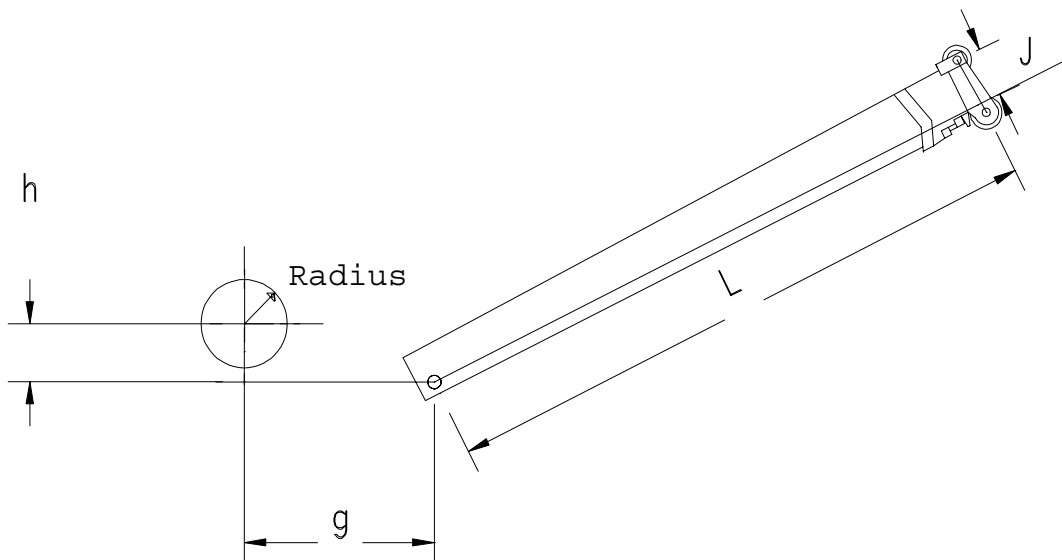
R - diameter of boom hoist cylinder rod

Greer Company

Winch Data

F - maximum rated line pull standard rope

The following data is required only for winches mounted off of the boom.



	Main/Front winch	Aux/Rear winch
L - horiz'l along boom from boom pivot to top sheave center (boom retracted)	<input type="text"/>	<input type="text"/>
J - vertical across boom from boom pivot to top sheave center (boom retracted)	<input type="text"/>	<input type="text"/>
G - horizontal between boom pivot and winch center of rotation	<input type="text"/>	<input type="text"/>
H - vertical between boom pivot and winch center of rotation	<input type="text"/>	<input type="text"/>
R - winch radius (include 2 or 3 layers of rope)	<input type="text"/>	<input type="text"/>

Dimension is negative when boom pivot is above winch center of rotation

Greer Company

Main Boom Data

Main boom head sheave radius

Maximum number of parts-of-line for main boom

Height of boom pivot above ground (on outriggers)

Describe each main boom configuration.
Provide a sketch or separate drawing for each mode of operation in the space below. Include telescoping sequences, weights, and CofG's.

Greer Company

Attachment Data

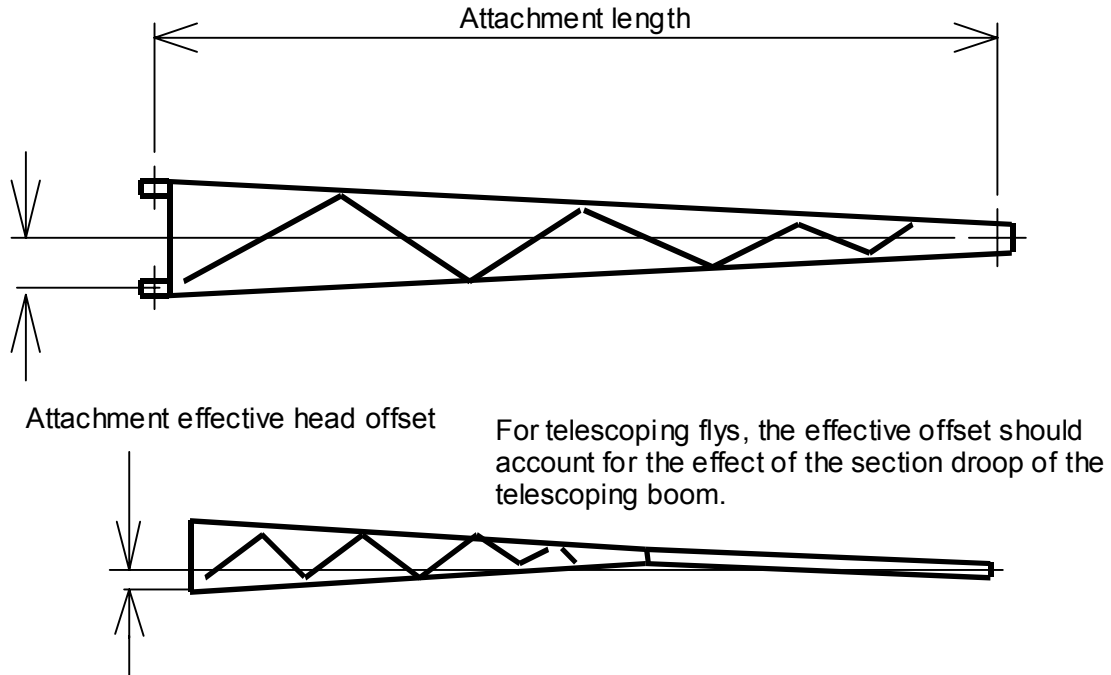
Attachments are extensions to the boom that are removable. Auxiliary heads should be included as an attachment. The following attachment data should be specified as accurately as possible to avoid calibration errors. Use data sheet on page 8 to indicate dimensions. Copy extra sheets as required.

Attachment length & head offset

The following dimensions should be specified to the nearest inch.

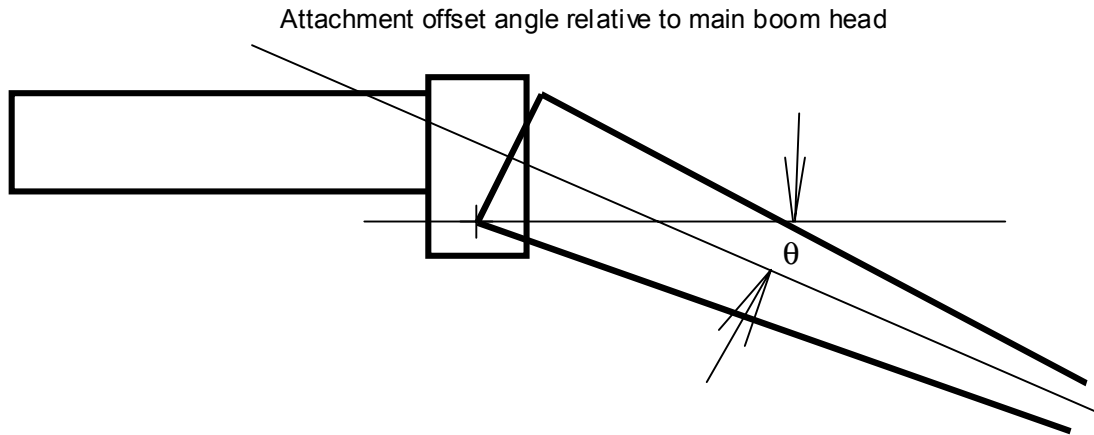
Attachment length: distance along fly center line, between fly attachment lower mounting pin and attachment head sheave center.

Attachment head offset: distance between attachment head sheave center and center line, perpendicular to center line.



Greer Company

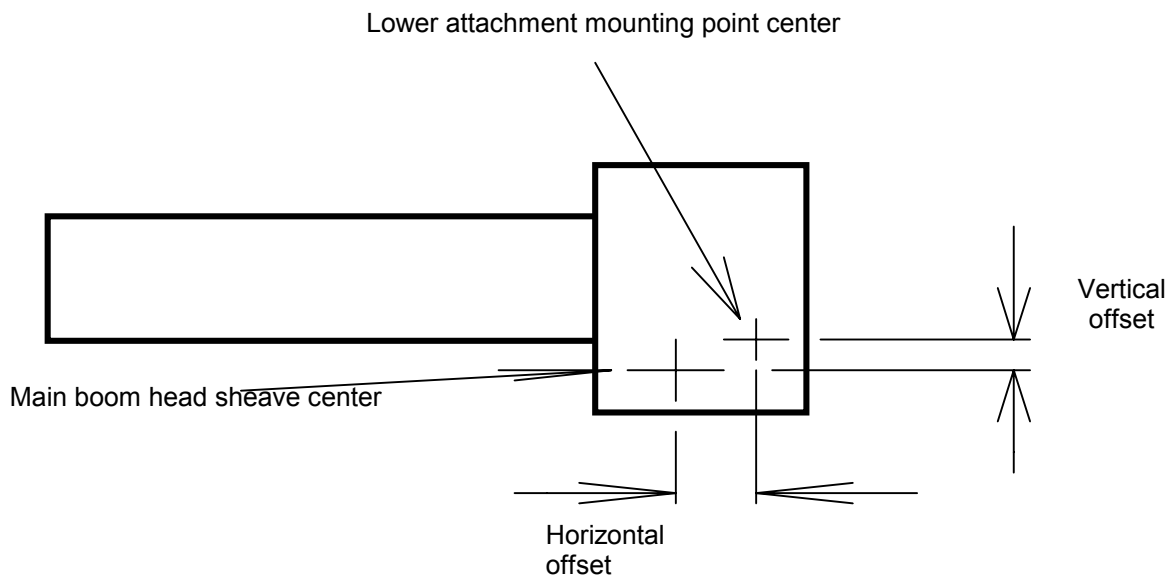
Attachment offset angle: Offset angle of attachment relative to main boom head (specify to nearest 0.1 degrees)



Attachment mounting offset:

Attachment mounting offset (horiz): Distance between main boom head sheave center and center of attachment lower mounting point along boom center line.

Attachment mounting offset (vert): Distance between main boom head sheave center and center of attachment lower mounting point perpendicular to boom center line.



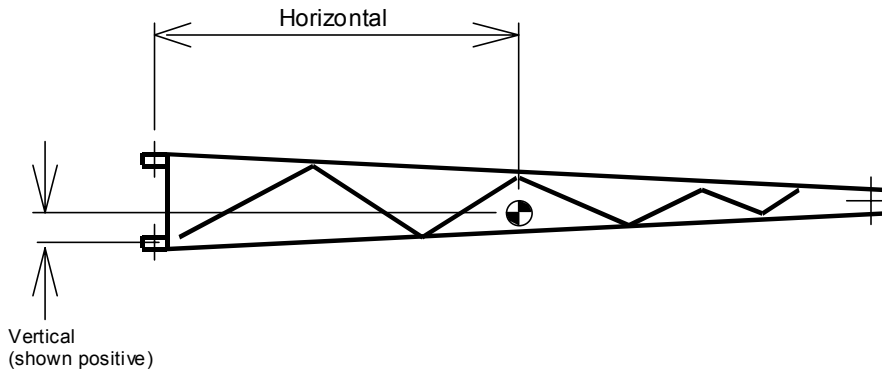
Greer Company

Attachment center of gravity

Indicate dimensions to nearest inch.

Attachment center of gravity (horiz): Distance between attachment lower mounting point and center of gravity along attachment center line.

Attachment center of gravity (vert): Distance between attachment lower mounting point and center of gravity perpendicular to attachment center line.

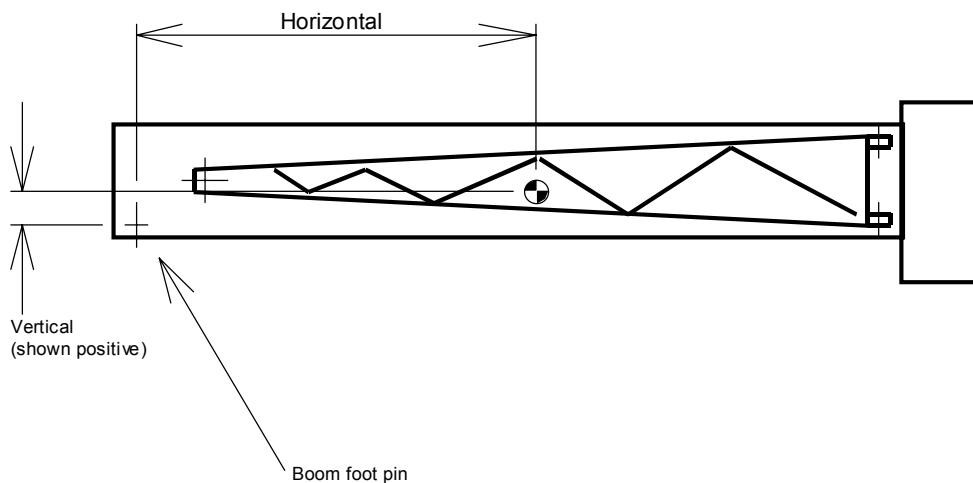


Attachment center of gravity (stowed)

Please indicate dimensions to nearest inch.

Stowed attachment center of gravity (horiz): Distance between main boom pivot and center of gravity along main boom center line.

Stowed attachment center of gravity (vert): Distance between main boom pivot and center of gravity perpendicular to main boom center line.



Greer Company

Attachment #1 Attachment #2 Attachment #3

Attachment name			
l - Attachment length			
s - Attachment head offset			
h - Attachment mounting offset - horizontal			
v - Attachment mounting offset - vertical			
a - Attachment offset angles			
g - Attachment center of gravity - horizontal			
t - Attachment center of gravity - vertical			
w - Attachment weight			
r - Head sheave radius			

Stowed attachment data

g - Attachment center of gravity - horizontal			
t - Attachment center of gravity - vertical			
Stowed deduct wt.			