

To learn more about this model, call 414-764-9200 or visit [giuffre.com](http://giuffre.com) today!



# V60 HI REACH



## KEY FEATURES

- Telescopic three-section boom with smooth 'point and shoot' functionality
- SMARTControl system provide smooth, precise operation and remote diagnostics
- Top-mounted two-person steel work platform
- New design allows 1,000 lb material handling or 500 lb jib
- Full length subframe for unmatched reliability
- Narrow hydraulic outriggers allow full setup in 9' wide space
- Great versatility and functionality on a non-CDL chassis



### SMARTControl System

Provides touchscreen/manual button operation, smooth and precise upper controls and Bluetooth connectivity to Elliott service.



### High Capacity Boom Winch

The 1,000 lb material handling winch option converts the HiReach into a combination aerial work platform and material handler.



### Narrow Outrigger Spread

An 9 foot spread provides full 360 degree operation, allowing setup in areas as tight as a single parking stall.



### Compact, Versatile Design

Engineered to be installed on a 19,500 lb GVWR truck with plenty of room for toolboxes and storage.

## OTHER FEATURES

- **Work Platform:** Electronic self-leveling and rotating steel 30" x 40" top-mounted work platform. Features 180 degrees of rotation. Includes upper control station with touchscreen and redundant button control to allow operations with gloves on.
- **Hydraulic System:** Hydraulically powered continuous rotation mechanism. Holding valves on all cylinders. 12V Emergency pump.
- **Outriggers:** "A" type hydraulically powered front and rear outriggers with 9' spread. Outrigger controls at ground level. 360 degree stability.
- **High Capacity Boom Winch:** Versatile winch design allows for 1,000 lb material handling or easily converts to 500 lb jib in the platform.
- **Certification:** Certified to ANSI A92.2 for Vehicle-Mounted Elevating and Rotating Aerial Devices.

\*Specifications are subject to change.



AVAILABLE AT:

**GIUFFRE.COM**

GIUFFRE BROS CRANES INC.

6635 SOUTH 13TH ST. - MILWAUKEE, WI 53221  
414-764-9200 • 877-321-3710

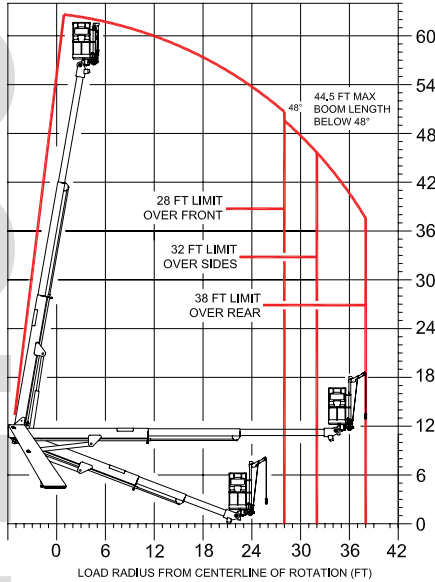
To learn more about this model, call 414-764-9200 or visit [giuffre.com](http://giuffre.com) today!



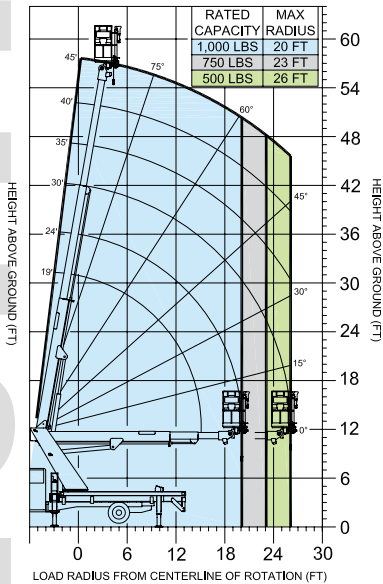
## V60 HIREACH

[elliottequip.com](http://elliottequip.com)

AERIAL PLATFORM WORKING RANGE



MAIN HOIST LOAD RATINGS



## TECHNICAL SPECIFICATIONS

<b>Working Height</b>	63'/19,2 m
<b>Side Reach</b>	38'/11,6 m
<b>Platform Capacity</b>	500 lb/227 kg
<b>Platform Size</b>	30" x 40"/76 x 102 cm
<b>Main Winch Capacity</b>	1,000 lb/453 kg
<b>Jib Winch Capacity</b>	500 lb/227 kg
<b>Front Outrigger Spread</b>	9'/2,7 m
<b>Rear Outrigger Spread</b>	9'/2,7 m
<b>Minimum GVWR</b>	19,500 lb/8845 kg

## AVAILABLE OPTIONS

- 500 lb Capacity Stowable Jib Winch in the Work Platform
- 1,000 lb Capacity Main Winch
- 110V Line to the Work Platform
- (2) Sign Forks on Work Platform
- Cold Climate Hydraulic Oil Heater
- Steel, Wood or Aluminum Flatbeds
- Steel, Aluminum or Fiberglass Service Bodies
- Steel or Aluminum Toolboxes
- Composite or Wooden Outrigger Pads
- Spanish/Metric Charts
- Painted White, Red or Custom Colors
- Radio Remote Controls
- Much more...

QUESTIONS? CONTACT US. 402-592-4500 | [sales@elliottequip.com](mailto:sales@elliottequip.com)



AVAILABLE AT:

**GIUFFRE.COM**

GIUFFRE BROS CRANES INC.

6635 SOUTH 13TH ST. - MILWAUKEE, WI 53221  
414-764-9200 • 877-321-3710